

Radius Point: 17188.74' rec.  
 Delta: 1°18'22" calc.  
 Length: 391.82' calc.  
 Tangent: 195.92' calc.  
 Chord: 391.82' calc.  
 Chord Bearing: N 4°14'20" E calc.

Radius: 17188.74' rec.  
 Delta: 0°10'08" calc.  
 Length: 50.68' calc.  
 Tangent: 25.34' calc.  
 Chord: 50.68' calc.  
 Chord Bearing: N 3°30'05" E calc.

**1" IRON "PINCHED" PIPE FOUND @ 44.20' & USED FOR LINE**  
**5/8" IRON PIN SET IN CONCRETE**

CENTERLINE (C.L.)  
 RIGHT-OF-WAY (R/W)

**30.1709 TOTAL GROSS ACRE PARCEL**  
 DEED OF RECORD: D.B. KOSIES VOLUME 1242, PAGES 144 & 145

**33.8327 TOTAL GROSS ACRE PARCEL**  
 DEED OF RECORD: D.B. KOSIES VOLUME 1242, PAGES 144 & 145

**5/8" IRON PIN SET IN CONCRETE**  
**8 1/2" x 7 1/2" STONE MONUMENT WITH DRILL HOLE FOUND @ 69.25' & USED FOR LINE**

O.D.O.T. P.T. STATION 16+53.01 rec.

O.D.O.T. P.C. STATION 12+10.51 rec.

O.D.O.T. P.T. STATION 16+53.01 rec.

**MADISON ROAD (S.R. 528) RW VARIES**

M. REED VOL. 217, PG. 470

V.G. AND T. REED VOL. 430, PG. 172

M. REED VOL. 217, PG. 470

P.W. AND G.S. ADAMS VOL. 732, PG. 663

ADAMS VOL. 663

MONTVILLE TOWNSHIP  
 HUNTSBURG TOWNSHIP

**DBK PLAT NO. 965 2014A**

**SEE PAGE NO. 1**

**SEE PAGE NO. 2**

**MATCH LINE**

**ATTACH LINE**

**ORIGINAL LOT NO. 5**

**ORIGINAL LOT NO. 3**

**ORIGINAL LOT NO. 6**

N 86°42'39" W

N 86°42'39" W

S 88°52'58" W

S 88°52'58" W

3825.13' C.L. - 3779.67' R/W (3780.93' 1" IRON "PINCHED" PIPE) TOTAL calc.

3837.95' C.L. - 3805.66' R/W (3768.70' STONE MONUMENT) TOTAL calc.

2570.10' calc.

384.40' calc.

41.22'

40'

59'

67'

72'

80'

81'

80'

71'

66'

65'

64'

63'

63'

62'

63'

62'

63'

62'

63'

62'

63'

62'

63'

62'

63'

62'

63'

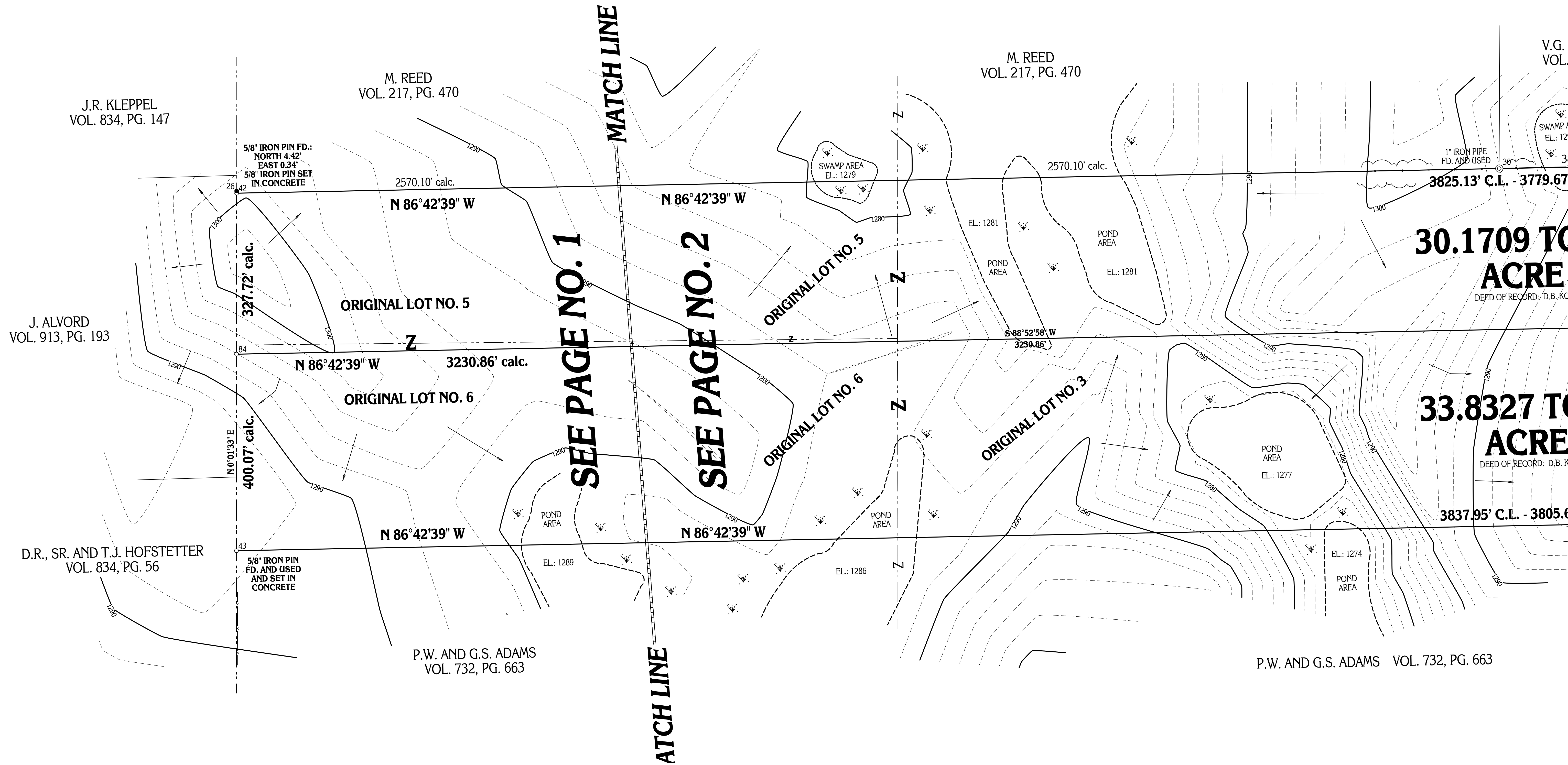
62'

63'

62'

63'

62'



**DBK PLAT NO. 965 2014B**