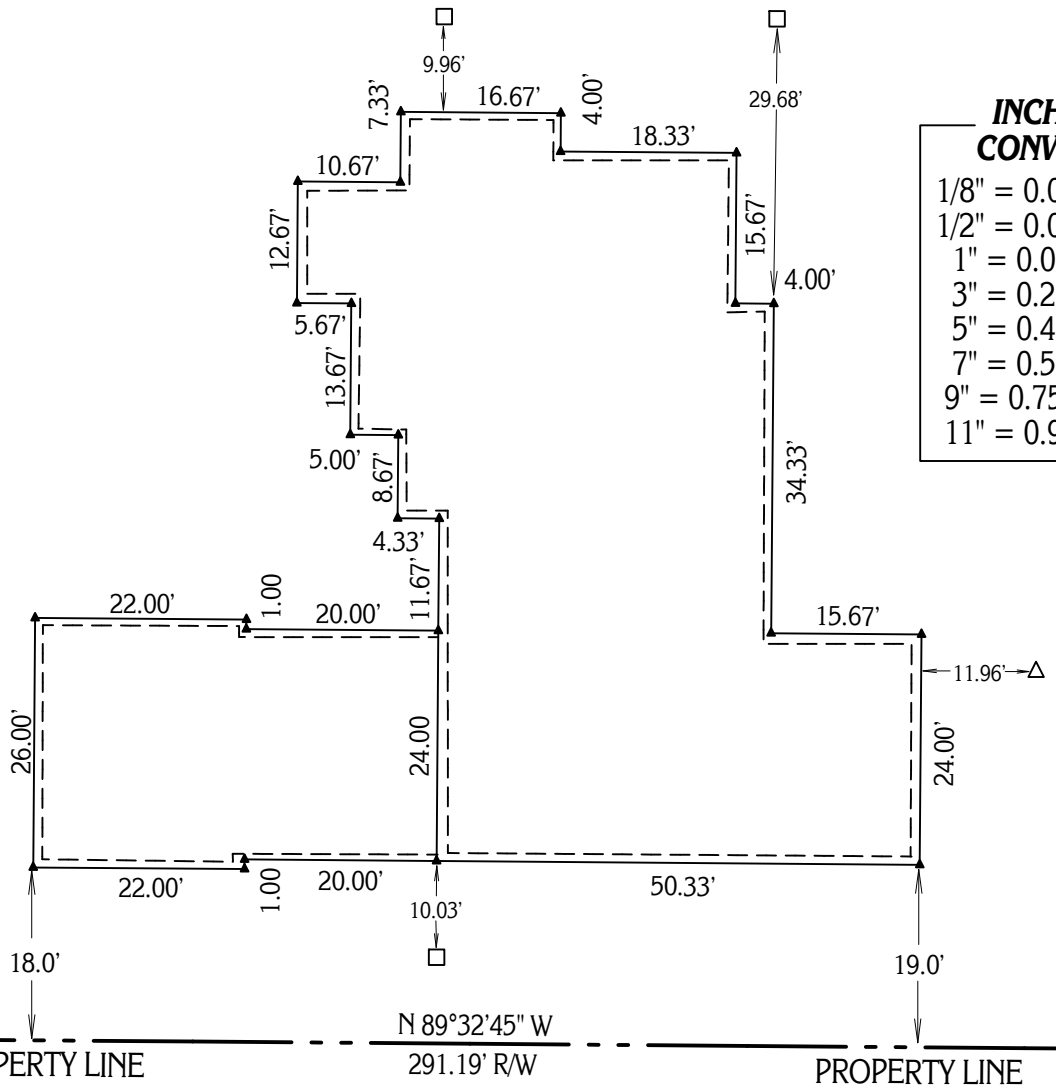
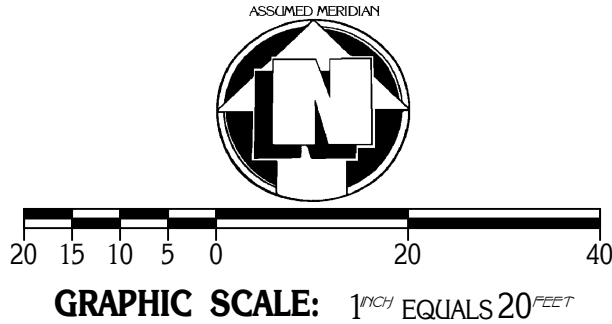


SKETCH OF BUILDING STAKING PREPARED FOR: De NIGRIS & SONS, INC. AND CRAIG S. COHEN 2869 LANDER ROAD PEPPER PIKE, OHIO



**INCH TO DECIMAL
CONVERSION TABLE**

1/8" = 0.0104'	1/4" = 0.0208'
1/2" = 0.0417'	3/4" = .06250'
1" = 0.083'	2" = 0.167'
3" = 0.250'	4" = 0.333'
5" = 0.416'	6" = 0.500'
7" = 0.583'	8" = 0.666'
9" = 0.750'	10" = 0.833'
11" = 0.916'	12" = 1.000'

- - DENOTES OFFSET HUB & TACK FOUND
- ▲ - DENOTES PK NAIL SET AT FOUNDATION CORNER
- △ - DENOTES HUB & TACK SET AT CONTROL POINT (DO NOT REMOVE)