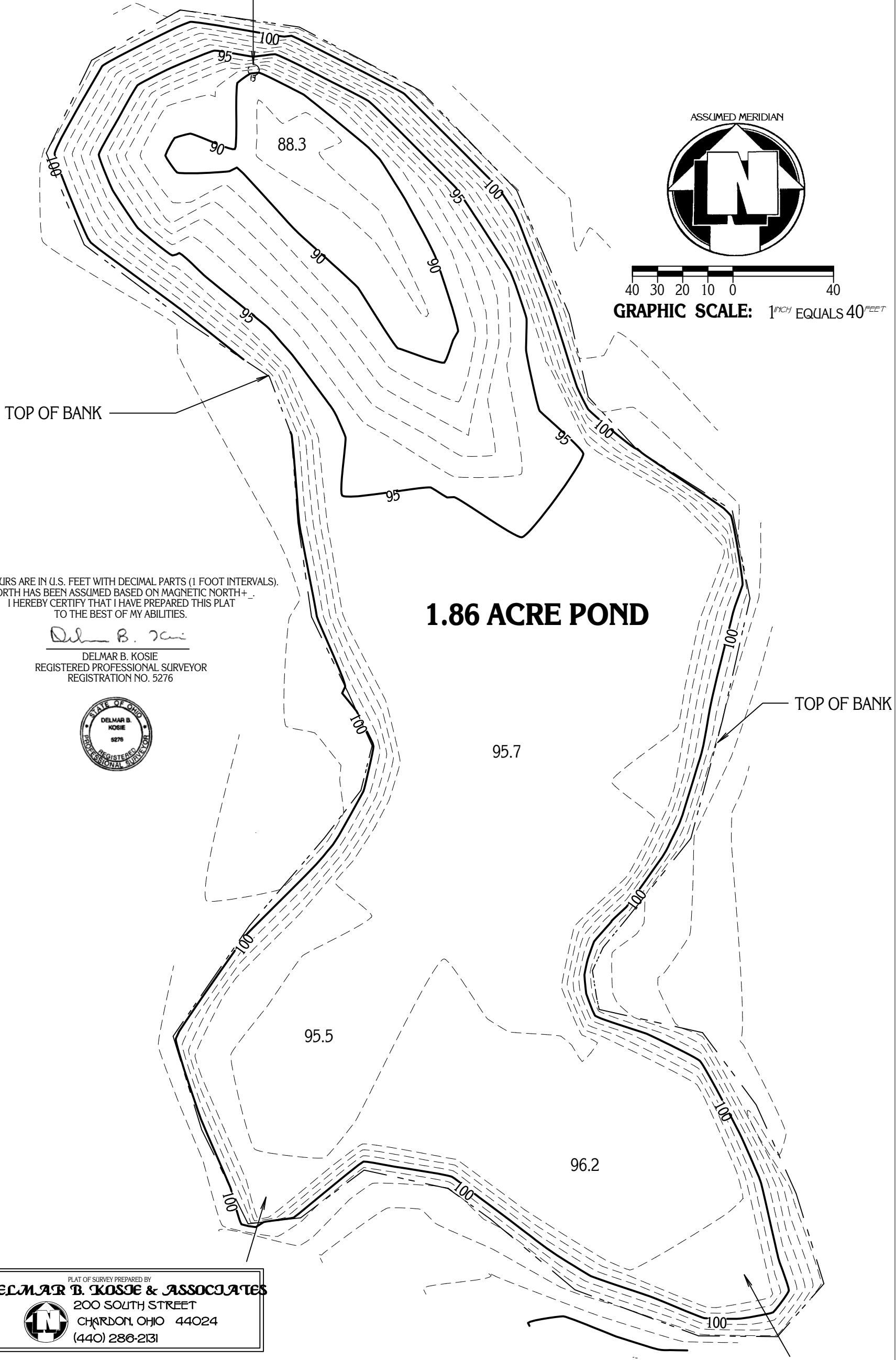


3FT. DIA. x 10.3' HIGH
WATER OVERFLOW RUNOFF.

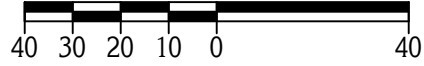
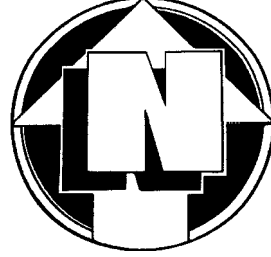
TOP OF RIM
ELEVATION: 100.00
(MEAN HIGH WATER LINE)

6" VALVE DRAIN
INVERT ELEVATION: 89.29

TOPOGRAPHIC SURVEY OF POND PREPARED FOR: DAVID MIHALIK



ASSUMED MERIDIAN



GRAPHIC SCALE: 1^{INCH} EQUALS 40^{FEET}

TOP OF BANK

CONTOURS ARE IN U.S. FEET WITH DECIMAL PARTS (1 FOOT INTERVALS).
NORTH HAS BEEN ASSUMED BASED ON MAGNETIC NORTH+ .
I HEREBY CERTIFY THAT I HAVE PREPARED THIS PLAT
TO THE BEST OF MY ABILITIES.

1.86 ACRE POND

Delmar B. Kosie

DELMAR B. KOSIE
REGISTERED PROFESSIONAL SURVEYOR
REGISTRATION NO. 5276



TOP OF BANK

PLAT OF SURVEY PREPARED BY
DELMAR B. KOSIE & ASSOCIATES
200 SOUTH STREET
CHARDON, OHIO 44024
(440) 286-2131

