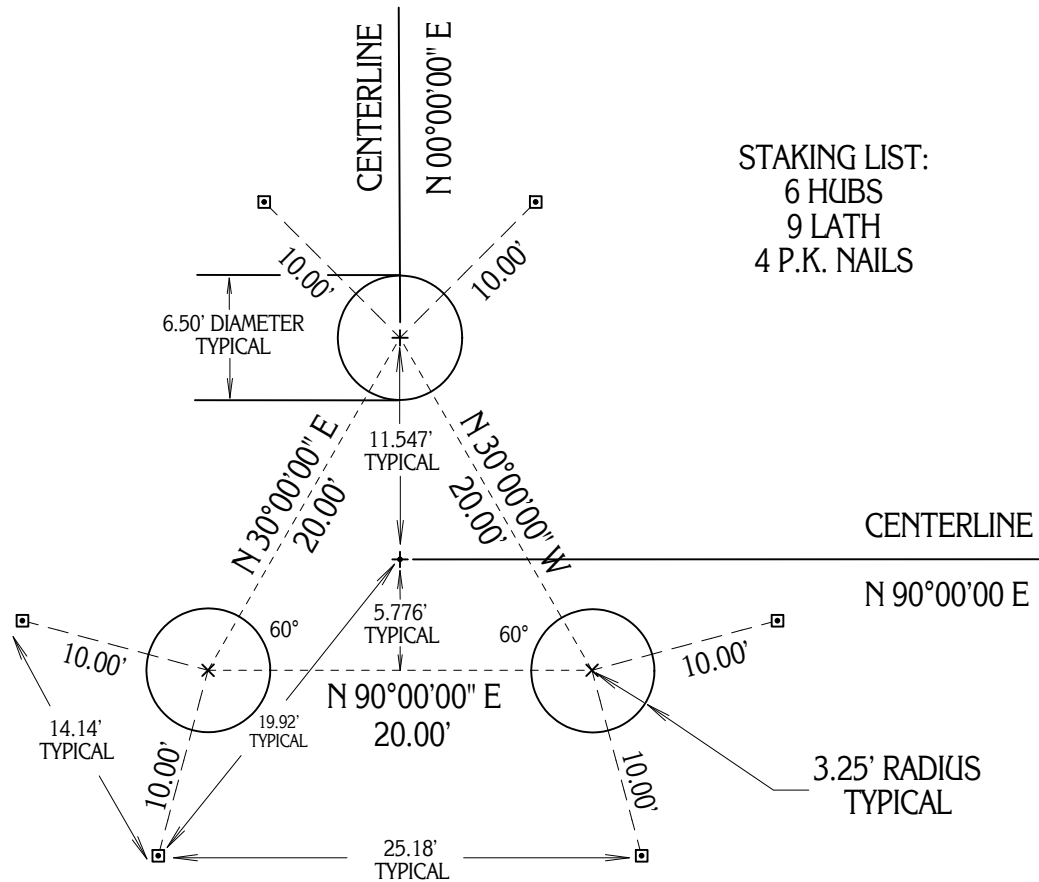


# TYPICAL 6.5' DIAMETER CONCRETE PEIR FOUNDATION LAYOUT FOR AT & T WIRELESS SERVICE TOWER.



GRAPHIC SCALE: 1" = 10'

☐ - DENOTES HUB AND TACK SET AT OFFSET (⊕)



STAKING LIST:  
 6 HUBS  
 9 LATH  
 4 P.K. NAILS

\*NOTE\* BEARINGS ARE TO AN ASSUMED MERIDIAN AND INDICATE ANGLES ONLY.