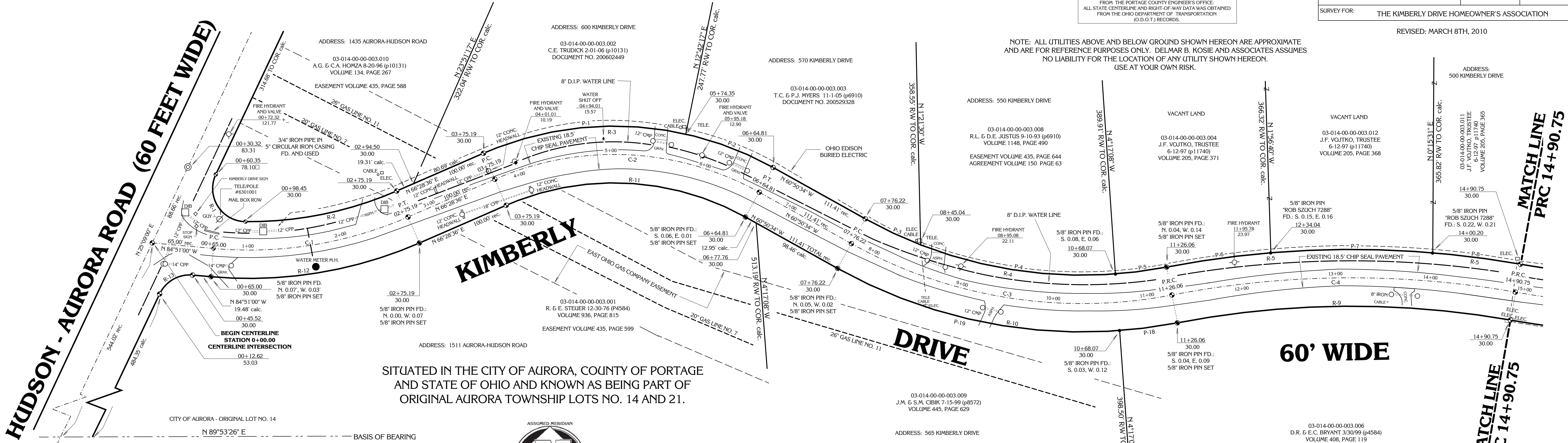


# PLAT OF DEDICATION AND CENTERLINE SURVEY PREPARED FOR: THE KIMBERLY DRIVE HOME OWNER'S ASSOCIATION

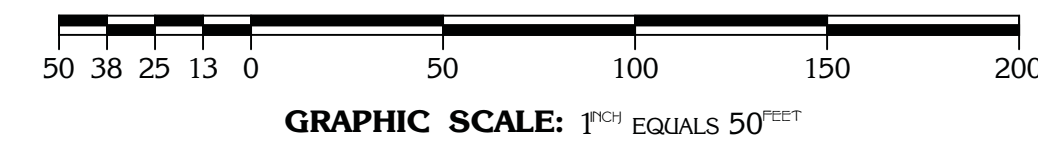
**BASIS OF RESEARCH AND RECORDS**  
ALL OWNERSHIP RESEARCH DATA AND PREVIOUS SURVEY RECORDS WERE OBTAINED FROM THE PORTAGE COUNTY RECORDERS OFFICE AND COUNTY MAP ROOM. ALL COUNTY CENTERLINE AND RIGHT-OF-WAY DATA WAS OBTAINED FROM THE PORTAGE COUNTY ENGINEERS OFFICE. ALL STATE CENTERLINE AND RIGHT-OF-WAY DATA WAS OBTAINED FROM THE OHIO DEPARTMENT OF TRANSPORTATION (O.D.T.) RECORDS.

TOWNSHIP/CITY/VILLAGE:	MONTH:	PAGE:
CITY OF AURORA	AUGUST	TWO
AURORA TOWNSHIP LOTS NO. 14 AND 21	YEAR:	OF
	2009	TWO
SURVEY FOR: THE KIMBERLY DRIVE HOMEOWNER'S ASSOCIATION		

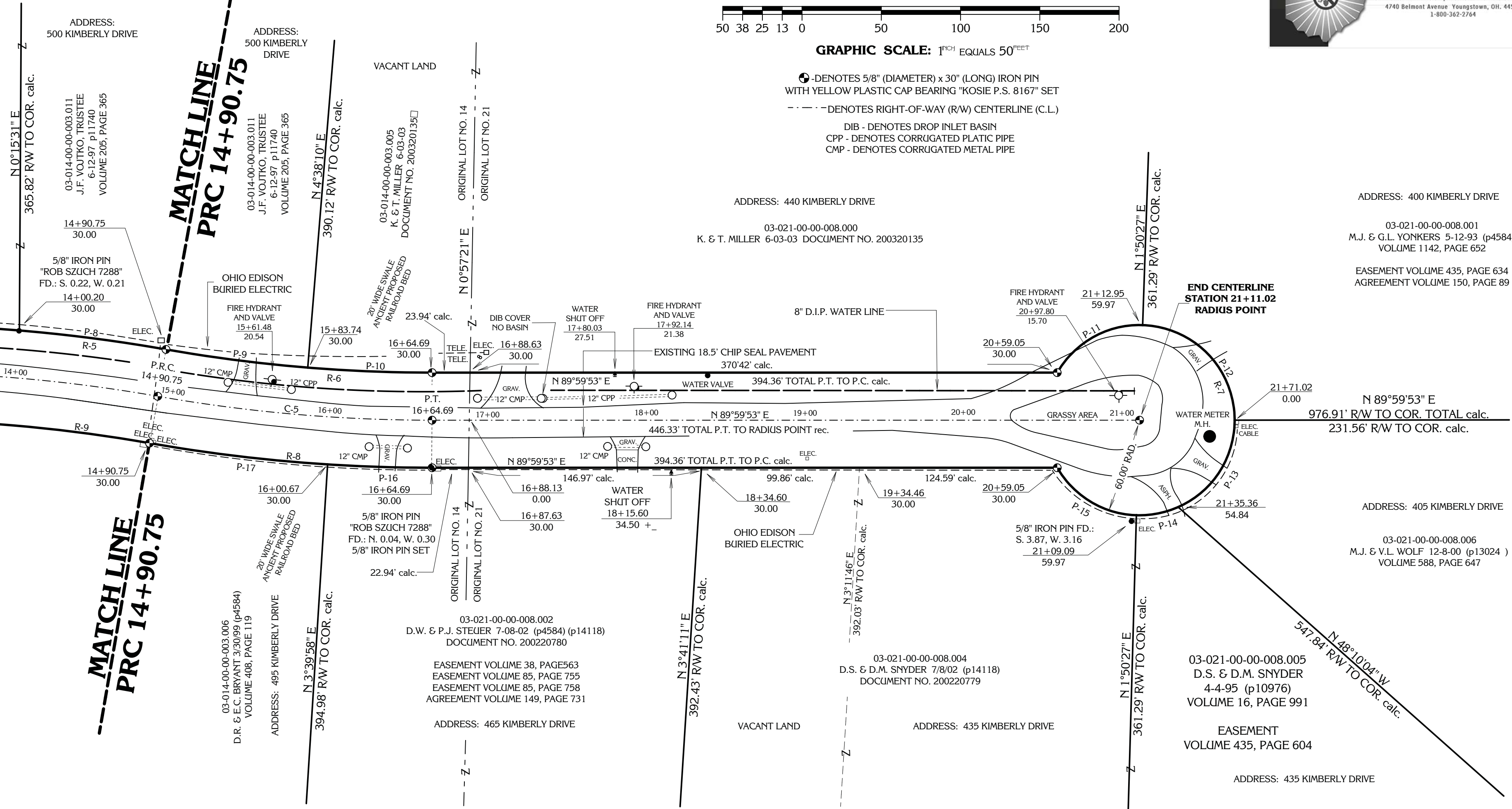
REVISED: MARCH 8TH, 2010



SITUATED IN THE CITY OF AURORA, COUNTY OF PORTAGE AND STATE OF OHIO AND KNOWN AS BEING PART OF ORIGINAL AURORA TOWNSHIP LOTS NO. 14 AND 21.



- DENOTES 5/8" (DIAMETER) x 30" (LONG) IRON PIN WITH YELLOW PLASTIC CAP BEARING "KOSIE P.S. 8167" SET
- DENOTES RIGHT-OF-WAY (RW) CENTERLINE (C.L.)
- DIB - DENOTES DROP INLET BASIN
- CPP - DENOTES CORRUGATED PLASTIC PIPE
- CMP - DENOTES CORRUGATED METAL PIPE



## CURVE DATA

C-1 DELTA: 28°40'24" RADIUS: 420.00' TANGENT: 107.34' LENGTH: 210.19' CHORD: 208.00' BEARING: N 80°48'48" E	C-2 DELTA: 52°40'50" RADIUS: 315.00' TANGENT: 155.96' LENGTH: 289.62' CHORD: 279.53' BEARING: N 89°10'59" W	C-3 DELTA: 40°05'18" RADIUS: 500.00' TANGENT: 182.42' LENGTH: 349.84' CHORD: 362.67' BEARING: N 80°53'13" W	C-4 DELTA: 20°53'42" RADIUS: 1000.00' TANGENT: 184.39' LENGTH: 364.69' CHORD: 342.74' BEARING: N 89°30'59" E	C-5 DELTA: 9°57'58" RADIUS: 1000.00' TANGENT: 173.94' LENGTH: 173.72' CHORD: 162.91' BEARING: N 85°01'09" W	R-1 DELTA: 114°33'46" RADIUS: 35.00' TANGENT: 54.48' LENGTH: 69.98' CHORD: 58.89' BEARING: N 32°07'53" W	R-2 DELTA: 24°06'38" RADIUS: 390.00' TANGENT: 83.29' LENGTH: 164.11' CHORD: 162.91' BEARING: N 78°31'59" E	R-3 DELTA: 52°40'50" RADIUS: 345.00' TANGENT: 170.81' LENGTH: 317.21' CHORD: 306.15' BEARING: N 87°10'59" W	R-4 DELTA: 40°05'18" RADIUS: 470.00' TANGENT: 171.48' LENGTH: 328.85' CHORD: 322.18' BEARING: N 80°48'48" E	R-5 DELTA: 20°53'42" RADIUS: 1000.00' TANGENT: 184.39' LENGTH: 364.69' CHORD: 342.74' BEARING: N 89°30'59" E	R-6 DELTA: 9°57'58" RADIUS: 970.00' TANGENT: 84.57' LENGTH: 168.72' CHORD: 168.51' BEARING: N 85°01'09" W	R-7 DELTA: 300°00'00" RADIUS: 345.00' TANGENT: N/A LENGTH: 314.16' CHORD: 60.00' BEARING: N 0°00'00" W	R-8 DELTA: 9°57'58" RADIUS: 470.00' TANGENT: 179.16' LENGTH: 179.16' CHORD: 178.93' BEARING: N 85°01'09" W	R-9 DELTA: 20°53'42" RADIUS: 35.00' TANGENT: 54.48' LENGTH: 69.98' CHORD: 58.89' BEARING: N 32°07'53" W	R-10 DELTA: 40°05'18" RADIUS: 530.00' TANGENT: 178.86' LENGTH: 370.83' CHORD: 363.31' BEARING: N 80°53'13" W	R-11 DELTA: 52°40'50" RADIUS: 345.00' TANGENT: 170.81' LENGTH: 317.21' CHORD: 306.15' BEARING: N 87°10'59" W	R-12 DELTA: 28°40'24" RADIUS: 450.00' TANGENT: 115.01' LENGTH: 225.20' CHORD: 222.86' BEARING: N 80°48'48" E	R-13 DELTA: 70°00'32" RADIUS: 35.00' TANGENT: 24.51' LENGTH: 42.77' CHORD: 40.15' BEARING: N 60°09'00" E	R-14 DELTA: 36°13'35" RADIUS: 345.00' TANGENT: 112.85' LENGTH: 218.14' CHORD: 214.52' BEARING: N 84°35'24" E	R-15 DELTA: 16°27'15" RADIUS: 345.00' TANGENT: 59.07' LENGTH: 99.07' CHORD: 98.73' BEARING: N 69°04'10" W	R-16 DELTA: 7°53'09" RADIUS: 470.00' TANGENT: 32.40' LENGTH: 64.69' CHORD: 64.64' BEARING: N 64°47'09" W	R-17 DELTA: 25°33'26" RADIUS: 470.00' TANGENT: 106.60' LENGTH: 209.65' CHORD: 207.91' BEARING: N 64°47'09" W	R-18 DELTA: 88°09'27" RADIUS: 60.00' TANGENT: 98.10' LENGTH: 92.32' CHORD: 83.48' BEARING: N 81°30'26" W	R-19 DELTA: 66°03'34" RADIUS: 60.00' TANGENT: 50.00' LENGTH: 68.18' CHORD: 65.41' BEARING: N 82°23'30" E	R-20 DELTA: 61°11'12" RADIUS: 470.00' TANGENT: 103.00' LENGTH: 211.12' CHORD: 207.91' BEARING: N 82°23'30" E	R-21 DELTA: 25°46'59" RADIUS: 1030.00' TANGENT: 15.73' LENGTH: 27.00' CHORD: 26.77' BEARING: N 82°09'44" E	R-22 DELTA: 5°11'17" RADIUS: 60.00' TANGENT: 45.14' LENGTH: 93.26' CHORD: 93.23' BEARING: N 82°37'48" W	R-23 DELTA: 3°40'05" RADIUS: 1030.00' TANGENT: 33.37' LENGTH: 65.94' CHORD: 65.93' BEARING: N 82°42'01" W	R-24 DELTA: 4°38'15" RADIUS: 970.00' TANGENT: 39.28' LENGTH: 78.51' CHORD: 78.49' BEARING: N 87°41'00" W	R-25 DELTA: 6°11'12" RADIUS: 530.00' TANGENT: 50.00' LENGTH: 64.76' CHORD: 61.66' BEARING: N 87°41'00" W	R-26 DELTA: 33°26'35" RADIUS: 530.00' TANGENT: 30.77' LENGTH: 309.36' CHORD: 304.98' BEARING: N 60°55'10" E	R-27 DELTA: 6°11'12" RADIUS: 470.00' TANGENT: 103.00' LENGTH: 211.12' CHORD: 207.91' BEARING: N 82°23'30" E	R-28 DELTA: 33°26'35" RADIUS: 530.00' TANGENT: 30.77' LENGTH: 309.36' CHORD: 304.98' BEARING: N 77°33'51" W
---	---	---	--	---	--	--	---	---	--	---	--	--	---	--	--	--	--	--	---	--	--	--	--	--	--	---	---	--	--	---	---	---

PLAT OF SURVEY PREPARED BY:  
**Delmar B. Kosie & Associates**  
Registered Land Surveyors  
11040 Madison Road  
Montville, Ohio 44064  
(440) 286-2131  
or (440) 968-3578  
http://www.dbksurveys.com