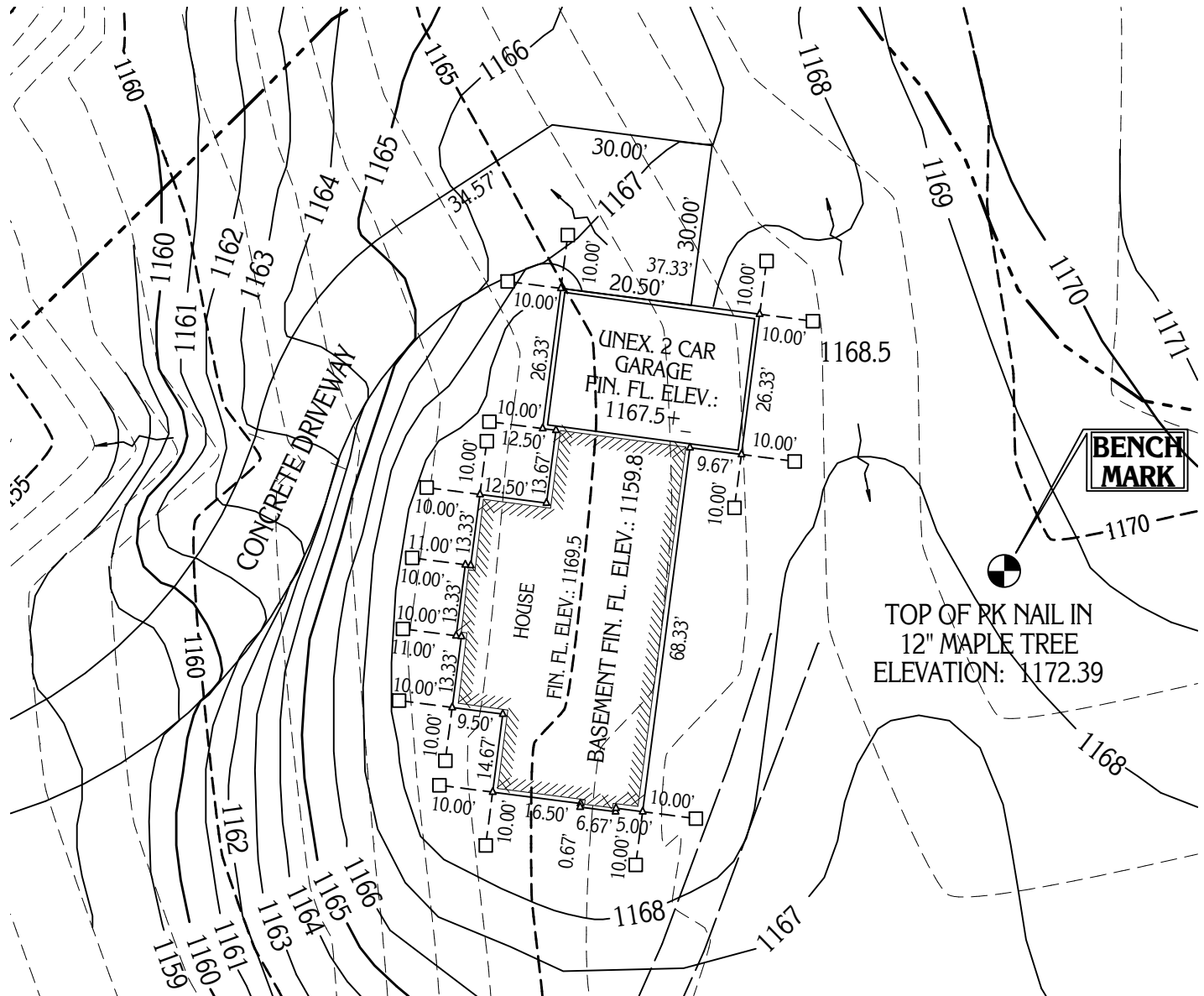


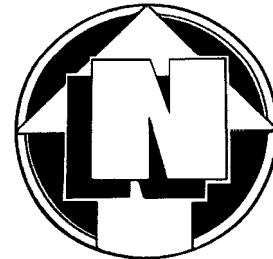
# HOUSE STAKING PREPARED FOR DANIEL M. WANTZ



## INCH TO DECIMAL CONVERSION TABLE

1/8" = 0.0104'	1/4" = 0.0208'
1/2" = 0.0417'	3/4" = .06250'
1" = 0.083'	2" = 0.167'
3" = 0.250'	4" = 0.333'
5" = 0.416'	6" = 0.500'
7" = 0.583'	8" = 0.666'
9" = 0.750'	10" = 0.833'
11" = 0.916'	12" = 1.000'

ASSUMED MERIDIAN



**GRAPHIC SCALE:** 1<sup>INCH</sup> EQUALS 30<sup>FEET</sup>

□ - DENOTES OAK HUB AND TACK SET

△ - DENOTES OAK LATH SET