



TRUE NORTH (Geoidic) North
ODOT VRS and CORS GNSS Network
NAD83 (2011), NAVD88, GRS80, Geoid12B

PLAT OF RE-SURVEY AND CONSOLIDATION OF:

Kennametal, Inc.
PPN 39-013-40-010-00, PPN 39-013-40-010-99,
PPN 38-013-40-011-00, PPN 39-013-40-011-99,
PPN 39-013-40-012-00, PPN 39-013-40-014-00 and
PPN 38-013-40-015-00

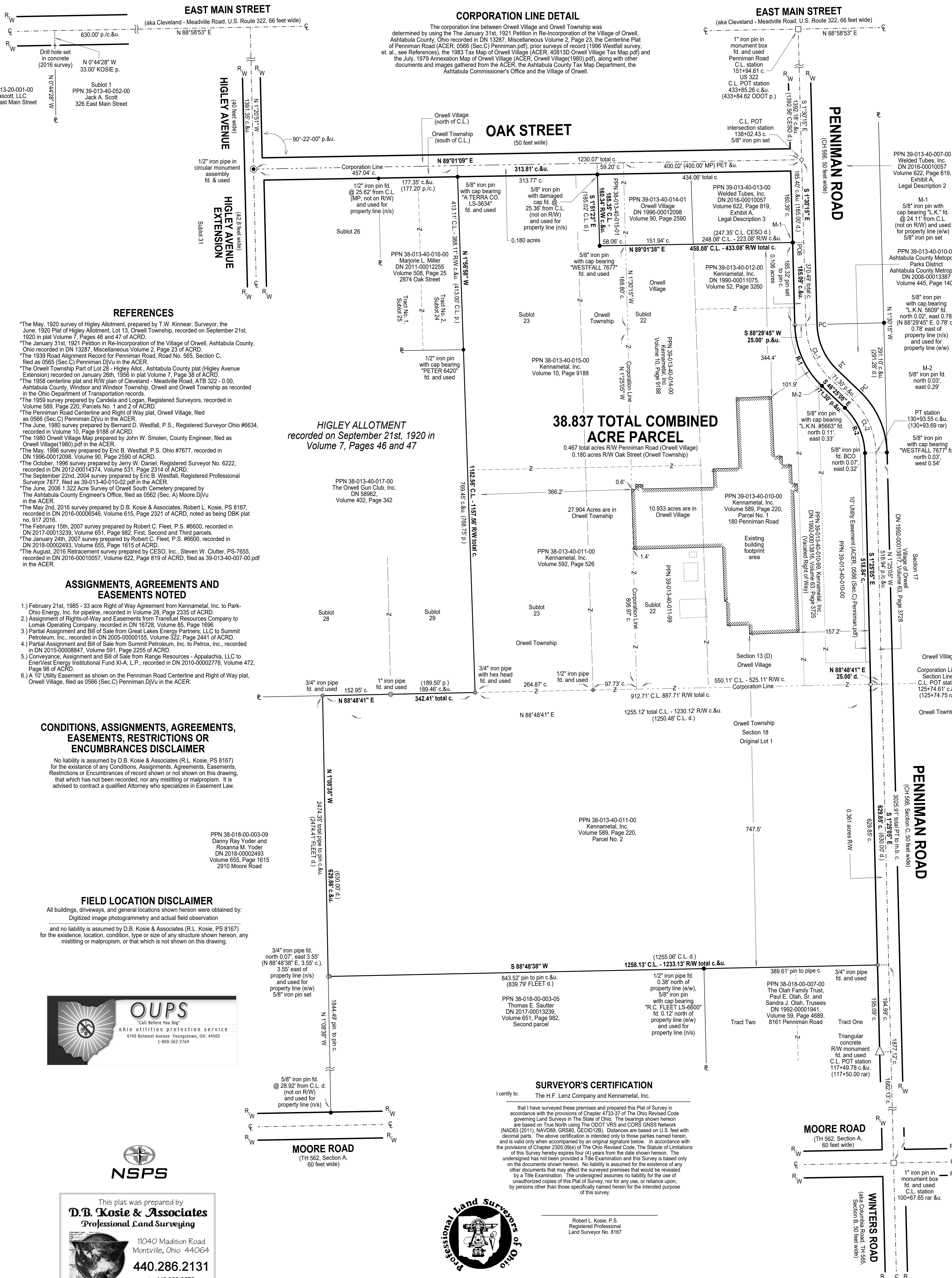
DEEDS OF RECORD:
Volume 10, Page 9188,
DN 1990-00011075, Volume 52, Page 3260,
Volume 589, Page 220, Parcel No. 1 (180 Penniman Road),
Volume 589, Page 220, Parcel No. 2, Volume 592, Page 526 and
DN 1992-00013815, Volume 63, Page 3725
(Road Vacation and Reversion)

NEW Road Dedication and Acquisition:
Village of Orwell
DN 1992-00013817, Volume 63, Page 3728

Table with columns: Situated in The, Month, Page, Year. Contains information about the Township and Village of Orwell, County of Ashland and State of Ohio.

BASIS OF RESEARCH AND RECORDS

All county ownership research data and previous survey records were obtained from The County Recorder's Office and Map Room. All county centerline and right-of-way data was obtained from The County Engineer's Office.



REFERENCES

- List of references including survey records, deed records, and other documents related to the property and roads.

ASSIGNMENTS, AGREEMENTS AND EASEMENTS NOTED

- List of assignments, agreements, and easements noted on the property, including utility easements and land sales.

CONDITIONS, ASSIGNMENTS, AGREEMENTS, EASEMENTS, RESTRICTIONS OR ENCUMBRANCES DISCLAIMER

No liability is assumed by D.B. Kosie & Associates (R.L. Kosie, PS 8167) for the existence of any Conditions, Assignments, Agreements, Easements, Restrictions or Encumbrances of record shown or not shown on this drawing.

FIELD LOCATION DISCLAIMER

All buildings, driveways, and general locations shown hereon were obtained by Digitized image photogrammetry and actual field observation.



Advertisement for D.B. Kosie & Associates Professional Land Surveying, including contact information and website.

SURVEYOR'S CERTIFICATION

I certify to: The H.F. Lenz Company and Kennametal, Inc.
that I have surveyed these premises and prepared this Plat of Survey in accordance with the provisions of Chapter 4723-37 of the Ohio Revised Code governing Land Surveys in the State of Ohio.



Robert L. Kosie, P.S.
Registered Professional
Land Surveyor No. 8167

DBK PLAT NO.: 1068 2019